

# Carbon Literacy

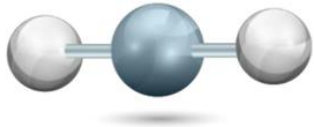


---

By Ioana Sovago

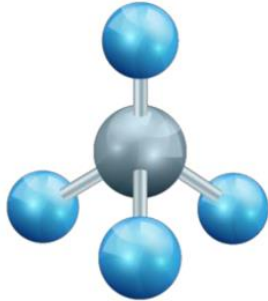
# Global warming potentials

Oil  
Cement  
Coal  
Gas  
Deforestation



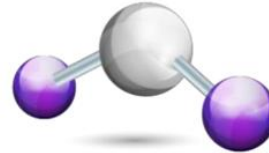
Carbon dioxide CO<sub>2</sub>

Livestock  
Organic waste



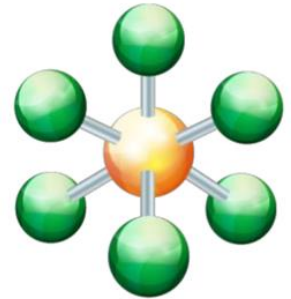
Methane CH<sub>4</sub>

Fertilisers



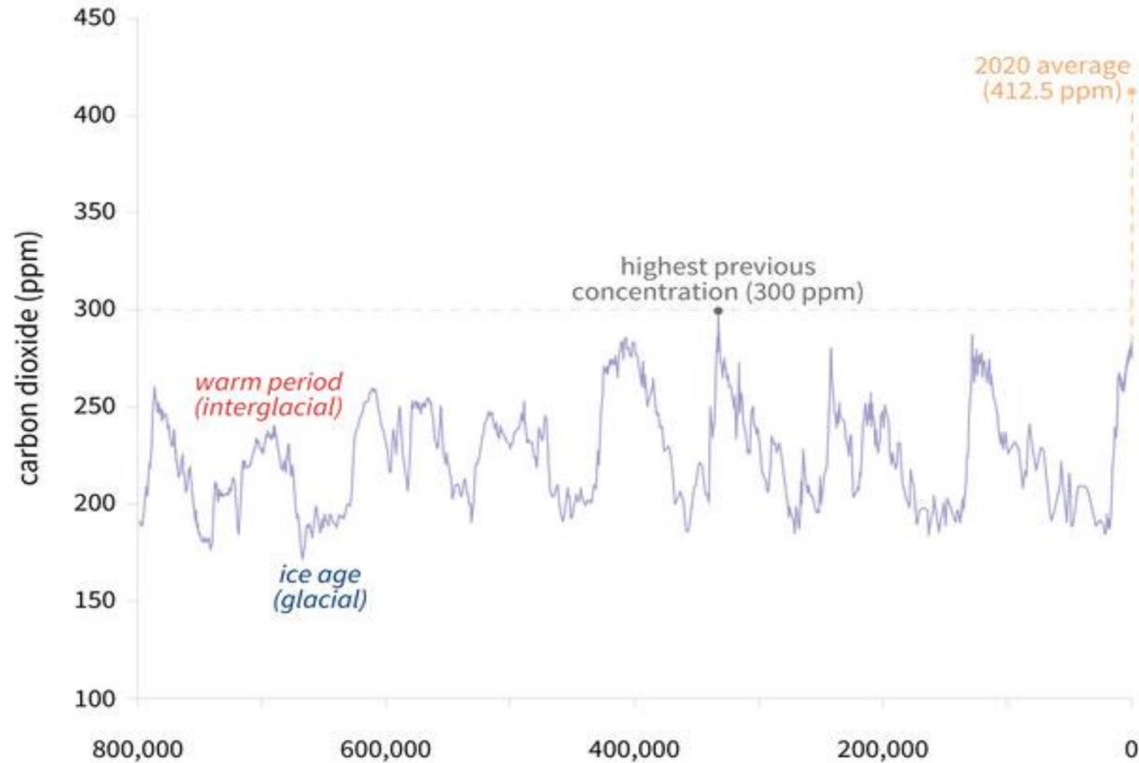
Nitrous Oxide (N<sub>2</sub>O)

Aerosols  
Refrigerators

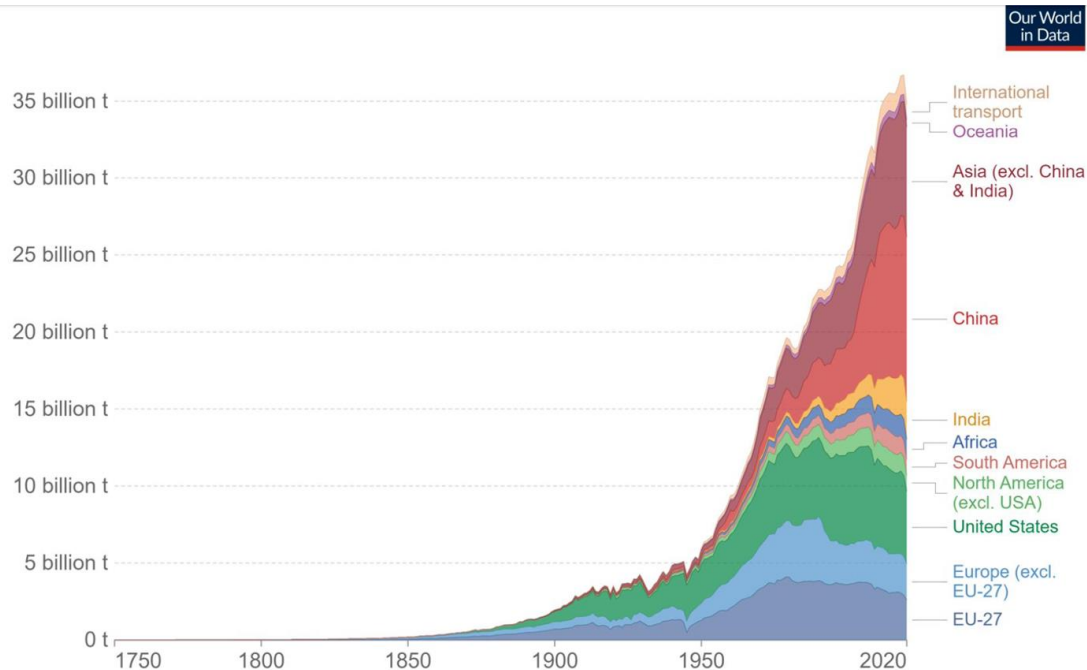


F gases

# Level of CO<sub>2</sub> over the past 800,000 years



# Total emission over time



Source: Global Carbon Project

OurWorldInData.org/co2-and-other-greenhouse-gas-emissions • CC BY

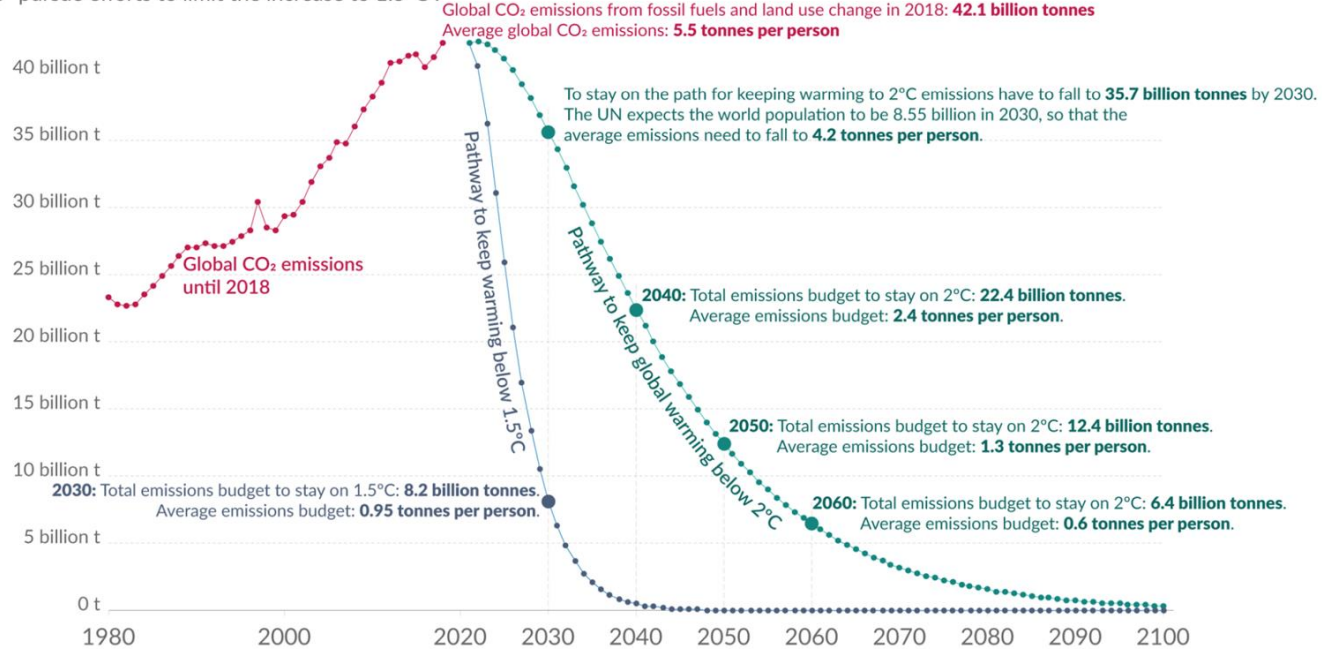
Note: This measures CO<sub>2</sub> emissions from fossil fuels and cement production only – land use change is not included. 'Statistical differences' (included in the GCP dataset) are not included here.

# Paris agreement

## CO<sub>2</sub> pathways to reach the Paris Agreement

Scenarios are based on the CO<sub>2</sub> reductions necessary if global emissions peak in 2021 and decline thereafter. The Paris Agreement's goal is to keep the increase in global average temperature to well below 2°C above pre-industrial levels and to "pursue efforts to limit the increase to 1.5°C".

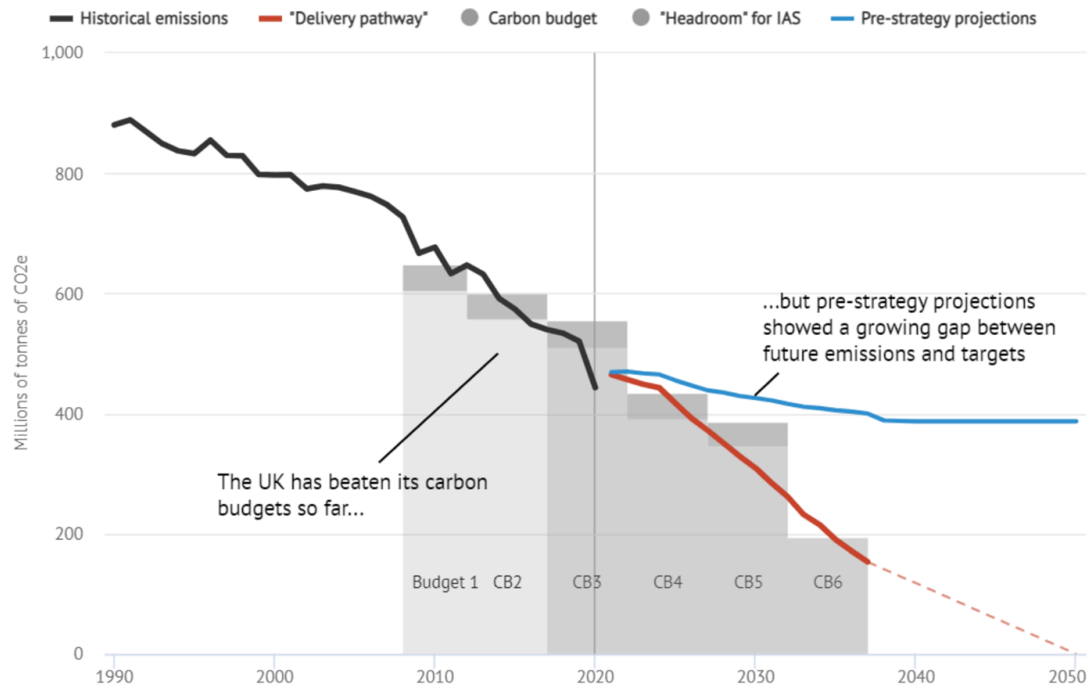
Our World  
in Data



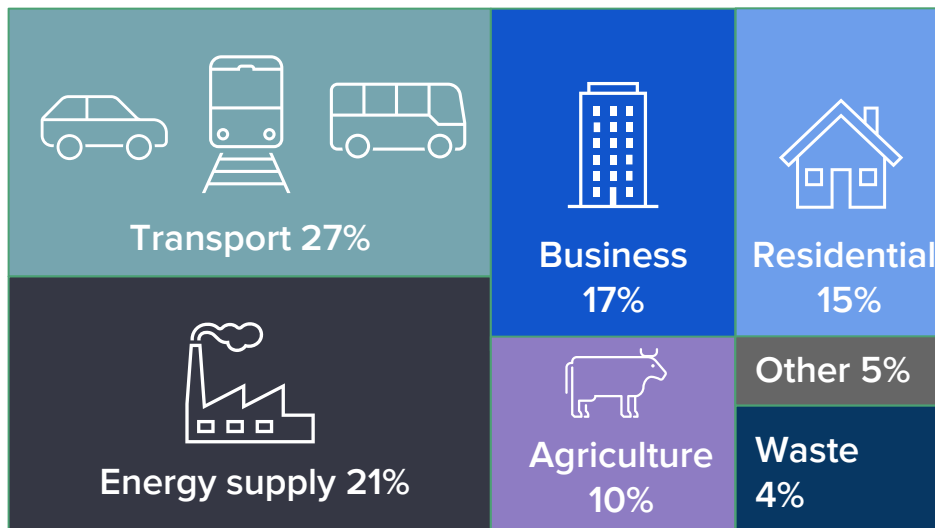
# Current UK progress

The UK net-zero strategy sets a **"delivery pathway"** to meeting its climate targets

Pre-strategy projections had suggested the UK would miss its fourth, fifth or sixth carbon budgets

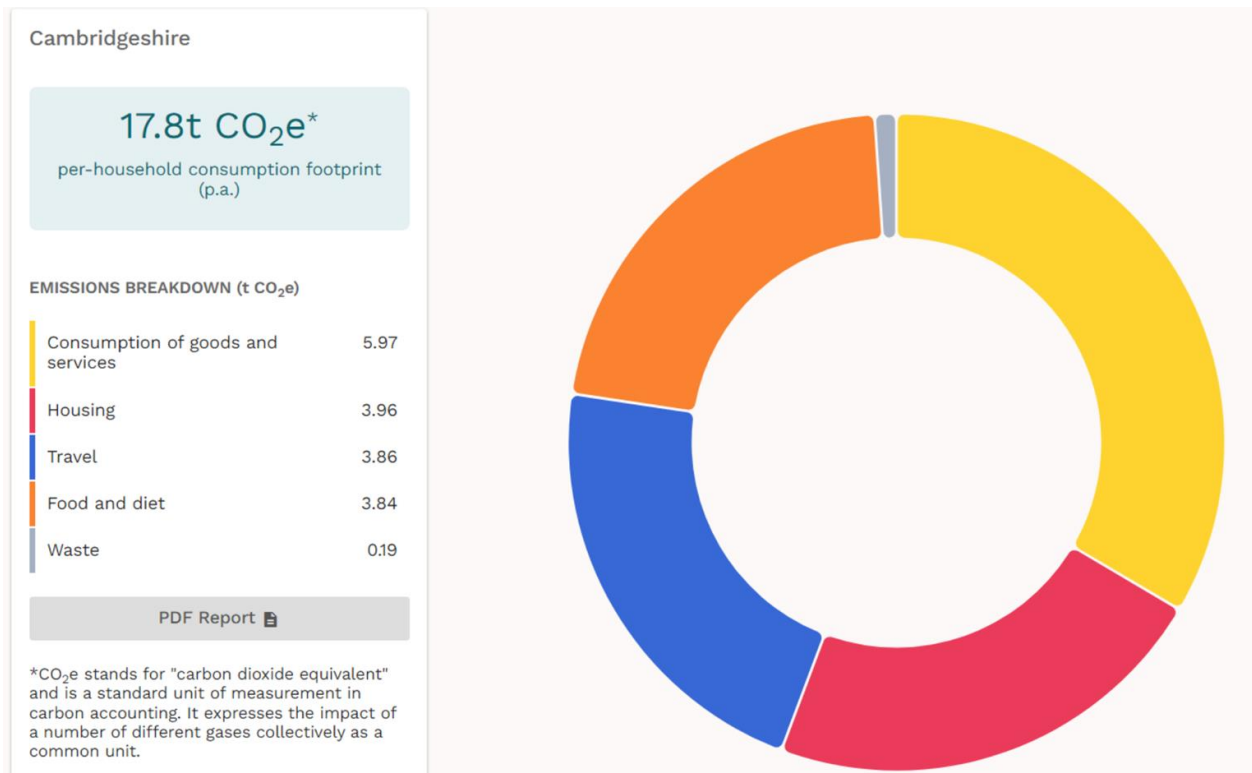


# UK Greenhouse emission



# Cambridgeshire's footprint

<https://impact-tool.org.uk/>





# UK risk areas



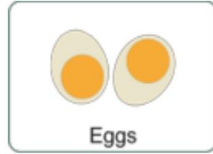
# Carbon Footprint per food

1



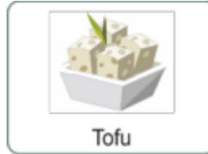
0.2 kg

2



0.3 kg

3



0.6 kg

4



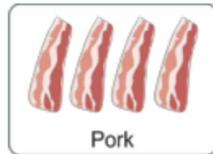
1.5 kg

5



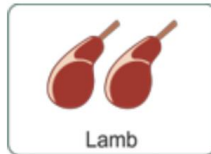
1.7 kg

6



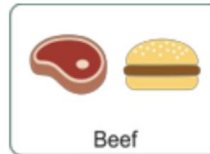
2.3kg

7



5.67kg

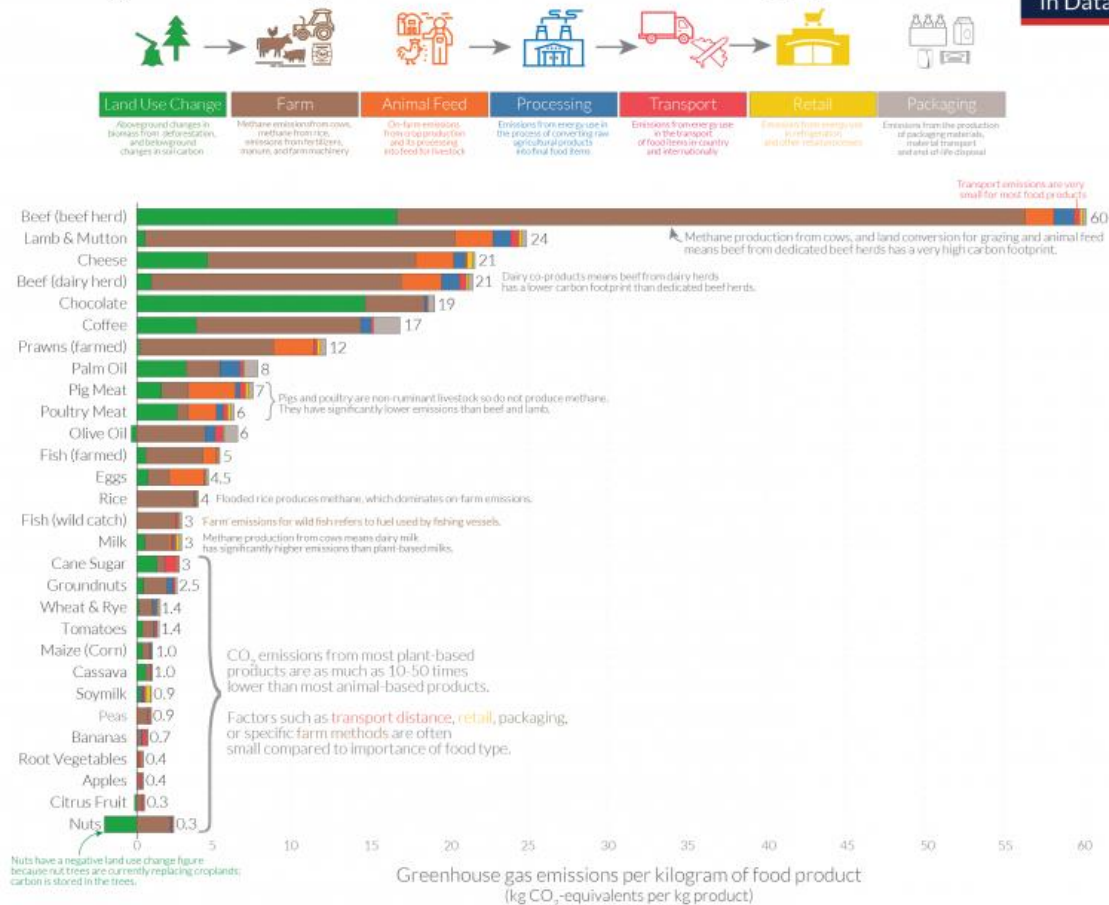
8



10.5kg

# Food: greenhouse gas emissions across the supply chain

Our World  
in Data



Note: Greenhouse gas emissions are given as global average values based on data across 38,700 commercially viable farms in 119 countries.

Data source: Poore and Nemecek (2018). Reducing food's environmental impacts through producers and consumers. Science. Images sourced from the Nouri Project.

OurWorldinData.org - Research and data to make progress against the world's largest problems.

Licensed under CC-BY by the author Hannah Ritchie.

# Carbon Map

<https://www.carbonmap.org/>



# Carbon Footprint

<https://footprint.wwf.org.uk/#/>



# Why Carbon Literacy in our Council

- Our value
  - Influence/impact
  - Duty/ethics
  - Political and social will
  - Government and sectoral targets
  - Financial savings
-

# What role the Town Council have?

1. Leading by example
2. Statutory and regulatory responsibilities/powers
3. Community leader and collaborator
4. Local and neighbourhood planning
5. Educator- sharing examples of good practice
6. Lobbying for policy changes and funding
7. Enabling practical action by local people





# What role the Town Council have?



Leading by example

Statutory and regulatory responsibilities/powers

Community leader and collaborator

Local and neighbourhood planning

Educator- sharing examples of good practice

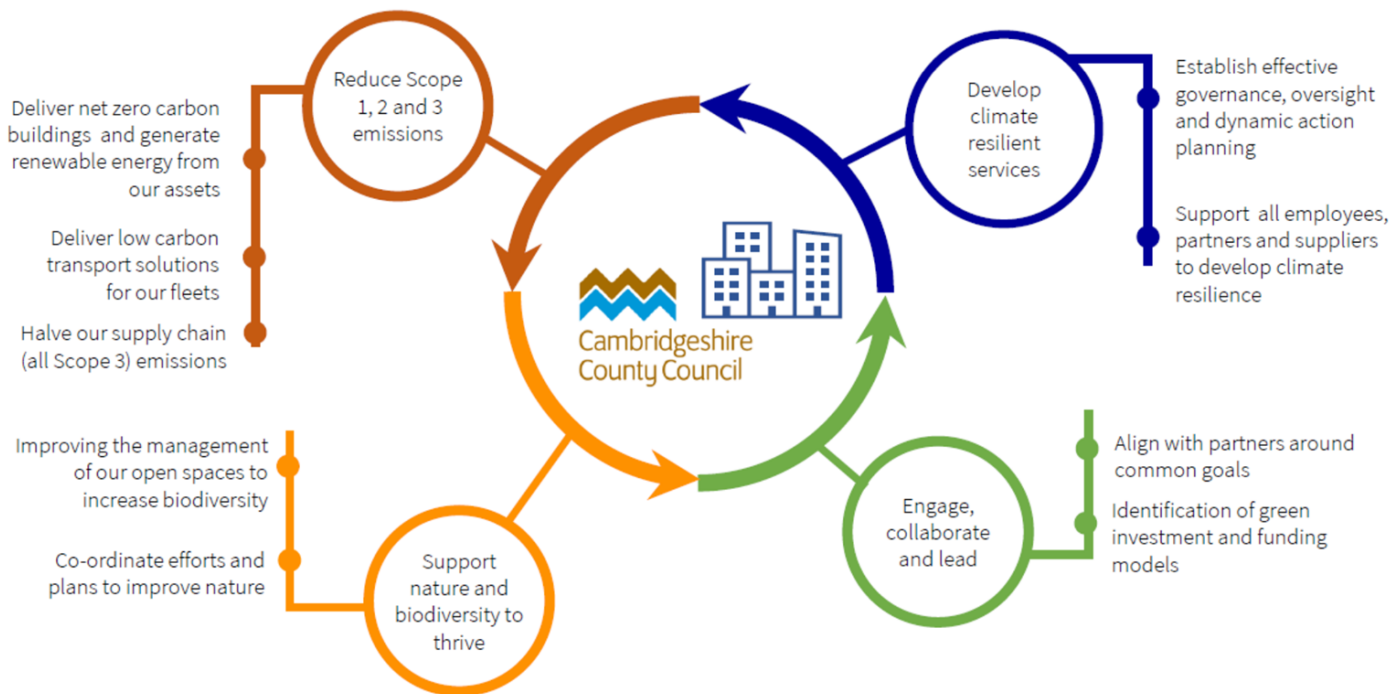
Lobbying for policy changes and funding

Enabling practical action by local people



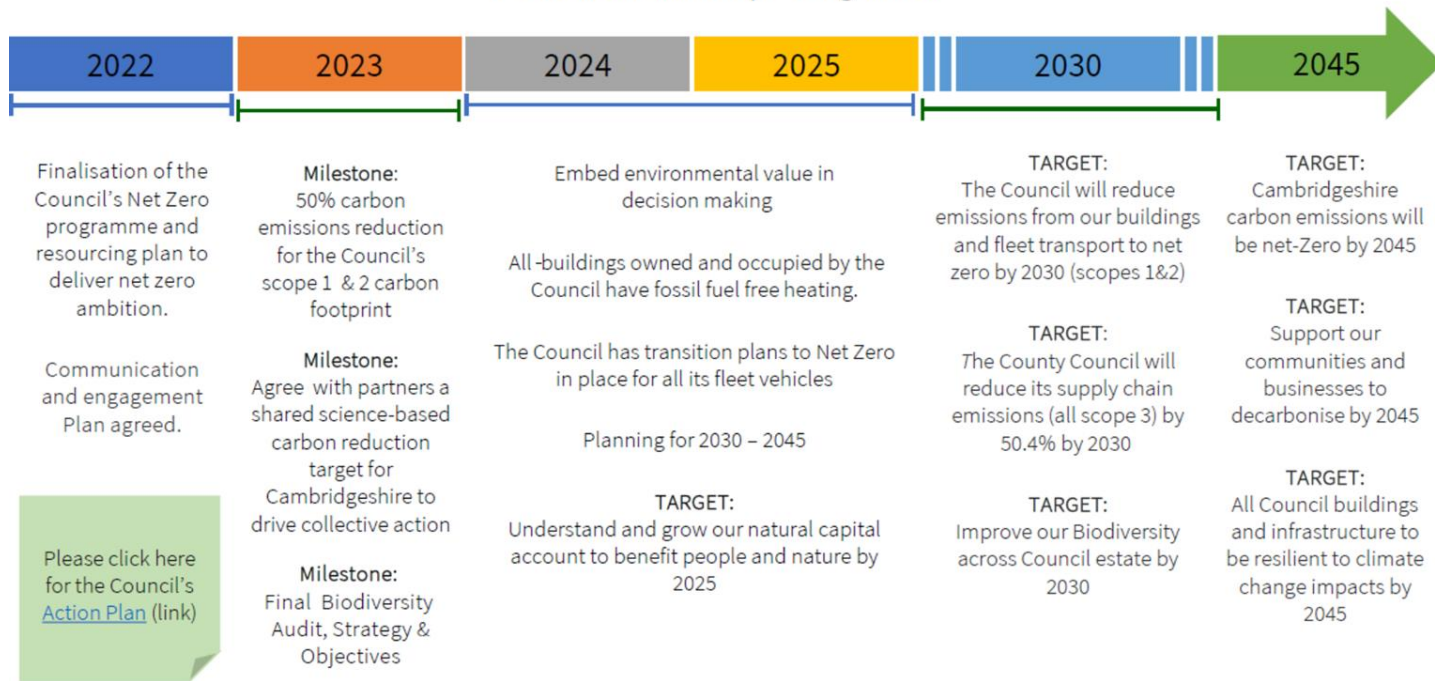
# Net Zero Cambridgeshire 2045

To halve emissions from our supply chain and operate our buildings and fleets with net zero emissions by 2030, the Council will deliver against these priorities



# Net Zero Cambridgeshire 2045

Key targets the Council will need to work towards in order to ensure we are on track for carbon reductions and improving nature



# Grant funding

- Community Energy England
- Rural Community Energy Fund
- Heat Networks Investment Project
- Electric Vehicle Charging Grant Schemes
- National Lottery
- Community Funds



# What can we do?

- Switch to LED
- Recycle
- Switch to renewable energy provider
- Double or triple glaze
- Smart meters



# Solar panels

<https://solartogether.co.uk/landing>





# Community engagement

- What low carbon initiatives would be popular with local people?
- Does it align with local concerns?
- How does it benefit the local community?
- Who do we need to get involved to make this work?