

**CAMBRIDGESHIRE COUNTY COUNCIL REPORT – MARCH 2024**  
**LONGSTANTON, NORTHSTOWE, OVER, OAKINGTON & WESTWICK**

**CLLR FIROUZ THOMPSON**

**FULL COUNCIL**

**Budget**

The council agreed its budget on Tuesday 13 February, prioritising funding to improve the condition of roads and footpaths, social care, and support for vulnerable communities.

This was a difficult budget process as many residents continue to feel the squeeze from cost of living pressures, but the council also faces significant cost increases. Those on the lowest incomes are also those who are often most reliant on services provided by the council.

The county council had to close a gap of £37.4M, with 75 per cent of the Council's net spending now being funded from Council Tax. Councillors have prioritised a number of key areas, based on residents' feedback from last summer's Quality of Life survey. The budget

- Sustains critical adults' & children's social care services.
- Includes record levels of highways funding to strengthen and improve the standard of roads and pavements, including tackling potholes, weeds and gulleys—in direct response to residents' concerns.
- Prioritises support for vulnerable communities, including continuing to providing holiday supermarket vouchers for those children most in need.

The council agreed a Council Tax rise of 4.99 per cent—2 per cent for Adult Social Services, and 2.99 per cent for general services—raising £17.5M of local income to help maintain and protect critical services for the most vulnerable communities. For the majority of residents in Band A-D properties that will mean an extra 99p to £1.48 a week.

A balanced council budget for the coming year is no mean feat after more than ten years of national underfunding, when so many county and unitary authorities are struggling. Some additional money from Government came in frustratingly late, well after most councils had set their budget. But this one-year funding does not address the longer term need for a Fair Funding Settlement in Cambridgeshire.

The council also expects the government's Household Support Fund to cease from the end of March. This is why the council's budget includes £3M to continue providing holiday supermarket vouchers for those most in need. Without this financial commitment from the council, this scheme would have had to stop when Government funding ended.

**Councillor allowances**

The council agreed to implement the council allowances scheme recommended by the independent panel set up for this purpose.

**(More) changes to composition of the council**

A by-election for the vacancy in Yaxley & Farcet will take place on Thursday 21 March. Meanwhile another change of party has taken place: Cllr Keith Prentice from St Neots has moved from the Conservatives to join the Independent group that is part of the council's Joint Administration.

\*\*\*\*\*

**STRATEGY RESOURCES & PERFORMANCE**

**Shire Hall back on the market**

Bids are invited for the lease or purchase of part of the Shire Hall site in Cambridge, after the previous preferred bidder was unable to continue their interest.

Shire Hall had been the County Council's headquarters since the 1930s, but the site itself was the seat of government in Cambridge for over a thousand years. Previously the site of two medieval castles, the building was the county council's administrative centre from its completion in 1933 until 2022, when the council relocated to Alconbury as part of its planned savings programme.

The property comprises the original Shire Hall, the Octagon, the Old Police Station, Castle Lodge and public car parking. Offers will be considered by the council's Assets & Procurement Committee in June, when councillors will review not only the financial bid made but whether the offer delivers environmental and social benefits.

The council expects strong interest from commercial bidders, with the building's prime position in Cambridge making it highly suitable for different uses. Due to the historic importance of the site all proposals will require full planning and listed building consents to ensure protection of the assets on site.

The council has applied to give part of the lawn between the front of Shire Hall and the Mound the legal protection of 'Town Green' status, and has also invested in new interpretation boards and increased litter bins and maintenance to improve the visitor experience. These areas are not included in the disposal.

More information from Max Marston at BNP Paribas Real Estate (Max.marston@realestate.bnpparibas).

<https://propertylink.estatesgazette.com/property-details/6943307-shire-hall-site-castle-street-cb3>

\*\*\*\*\*

## ADULTS & HEALTH

### Measles update

With cases of measles rising in some areas of the country, the council is asking everyone to check their MMR (measles, mumps and rubella) vaccination status and get vaccinated if not up to date.

Measles is a highly infectious illness which can be very unpleasant and sometimes lead to serious complications. Two doses of the MMR vaccination give long-lasting protection against measles.

In the UK, the MMR vaccination is given as part of the routine childhood vaccination schedule. The vaccine is free, available from GPs, and anyone can catch up at any age on missed doses. An alternative MMR vaccination is available which does not contain pork products.

Walk-in vaccination clinics are taking place across Cambridgeshire. These are for anyone over the age of one year who is not up to date with their MMR vaccinations. More information at <https://www.cpics.org.uk/measles>

Individuals should check their vaccination status if possible before attending one of these clinics. Vaccination records are in a child's personal health record (red book). Adults can check if they have been vaccinated with their GP or vaccination records from childhood.

### NHS dentistry under the spotlight

The county council's Adults & Health Committee will be scrutinising the provision of NHS dentistry in Cambridgeshire at its meeting on Thursday 7 March.

In recent years the availability of NHS dental care has shrivelled to almost zero, with many practices closing their doors to new NHS patients or ceasing to provide NHS dental care altogether. Dentists say that under the current contract, it is no longer financially viable to offer NHS procedures because of a lack of Government investment. One in five people have resorted to 'DIY dentistry' and 4.4 million children in England have not seen an NHS dentist in at least a year, leading to a 17 per cent increase in tooth decay-related extractions in children.

In February NHS England published a joint NHS and Department of Health and Social Care (DHSC) 'Dental Recovery Plan' to try to address the growing crisis. This includes

- a 'new patient' payment of between £15 and £50 (depending on treatment need) to treat around a million new patients who have not seen an NHS dentist in two years or more
- focus on prevention and good oral health in young children and an expanded dental workforce
- advice for parents and parents-to-be on taking care of baby gums and milk teeth
- one-off payments of up to £20,000 for dentists working in under-served areas for up to three years.

The minimum value of dental activity under the dental contract will increase from £23 to £28. This will affect only a small number of contracts across Cambridgeshire and Peterborough, and any additional funding will need to be covered from the current dental budget of the local NHS Integrated Care Board.

Mobile 'dental vans' will be launched in rural and coastal areas, with at least one of these vans coming to Cambridgeshire and Peterborough.

Cambridgeshire NHS has put in place a local Dental Improvement Plan, and identified the areas most in need as being Fenland, Littleport, Ely, and Peterborough.

### Have your say on creating Healthy Places

Cambridgeshire's public health team is inviting residents to have their say on how new and existing communities can be healthy, supportive and inclusive.

Work is currently under way to develop the Healthy Places Joint Strategic Needs Assessment for Cambridgeshire and Peterborough. To inform this, the team has launched a survey asking for views on access to healthcare services, inclusive and accessible green spaces, opportunities for active travel and healthy play and leisure, and the provision of affordable healthy food options.

The survey is at <https://www.smartsurvey.co.uk/s/WNC1CB/> and is open until Monday 15 April at 5:00PM. It will take around 10-15 minutes to fill in and may be completed on behalf of yourself or someone you care for. If you would prefer to complete a paper copy, you can pick one up from your local library.

If you have any questions about the survey or the Healthy Places Joint Strategic Needs Assessment for Cambridgeshire and Peterborough, please email [healthinallpolicies@cambridgeshire.gov.uk](mailto:healthinallpolicies@cambridgeshire.gov.uk)

\*\*\*\*\*

### CHILDREN AND YOUNG PEOPLE

#### More pupils get first choice of secondary school

A greater percentage of Cambridgeshire students will be going to their first choice secondary school this September.

A total of 87.9 per cent have been offered a place at their first choice school—up from 87.1 per cent last year. The proportion offered a place at their first, second or third preference school has also risen, from 95.4 per cent in 2023 to 95.8 per cent this year. The total number of places offered this year was fewer than last – 7,220 compared with 7,413.

#### Supermarket vouchers

More than 23,000 supermarket vouchers were distributed during the February half term to eligible families in Cambridgeshire.

#### Ofsted inspection of children's services

The council's children's services has been notified that we will be inspected under the inspection of local authority children's services (ILACS) framework. This inspection will last for three weeks.

\*\*\*\*\*

### COMMUNITIES SOCIAL MOBILITY & INCLUSION (COSMIC)

#### Free data SIM cards for low income households

A reminder that Cambridgeshire Libraries are part of Good Things Foundation's National Databank, O2 and Vodafone scheme, which makes free data SIM cards or vouchers available to anyone aged 18+ from a low-

income household. Recipients can self-declare as eligible, and the support is available for a maximum period of twelve months. The data can be used with any SIM-enabled device.

This offer is available at a range of libraries, our surrounding libraries are: Willingham, Bar Hill, Cottenham. Ask library staff for more details.

\*\*\*\*\*

## **ENVIRONMENT & GREEN INVESTMENT**

### **Weekly Food Waste**

The Government is moving towards weekly food waste collections across the country, with financial support to district councils for changes to collection of the waste, but not to county councils for disposing of it.

Any councils not taking up the arrangements would be 'named in legislation' as being exempt from these collection arrangements, until such time as their existing waste contracts expired. In Cambridgeshire's case this is 2037, when the PFI contract at Waterbeach ends—a long time to wait.

After prolonged discussion between Cambridgeshire's county and district councils, they have been able to agree to move to weekly collections, and avoid being listed in the legislation.

### **Wisbech incinerator given the go-ahead**

A proposal for a large incinerator in Wisbech was given permission by the Secretary of State last month. Medworth CHP Ltd applied for planning permission to create an energy from waste combined heat and power facility, capable of generating over 50 megawatts of electricity.

Due to the size of the proposed development, the planning inspectorate, rather than any local authority, examined Medworth's application. The planning inspector made their recommendation to the Secretary of State for the Department for Energy Security and Net Zero, the Rt Hon Claire Coutinho MP, who has made the decision to approve the proposal.

Councillors from all parties at Cambridgeshire County Council were united in opposing this development. It was also opposed by Fenland District Council, Norfolk County Council, and the Borough Council of King's Lynn and West Norfolk, as well as hundreds of local Wisbech residents. Fenland District Council has resolved to begin the process of considering whether it has any grounds for judicial review of the decision.

The scale of the development put forward by Medworth CHP and its effects on the surrounding area has raised serious concerns. In representations at the public inquiry earlier in the year, the county council highlighted the impact of the suggested development on the landscape, carbon emissions, and transport links in and around Wisbech.

But when it comes to nationally significant infrastructure projects like this one, the decision—and responsibility for the decision—lies with central government.

In a strange twist, the decision by the Minister was removed from the planning inspectorate's website the day after it was announced—but it was reinstated within a matter of days. A separate decision by the Environment Agency on permitting for the facility has not yet been made.

### **Envar incinerator 'called in' for Government to decide**

The owners of the Envar waste facility at Woodhurst near Somersham are currently appealing against the decision of the county council to refuse their application for a clinical waste incinerator—and an appeal hearing is ongoing. However, the Government has now intervened and 'recovered' the application for the Secretary of State to determine. The Planning Inspector will therefore only make recommendations to the Secretary of State.

### **Community Flood Risk newsletter**

The Cambridgeshire & Peterborough Flood and Water Partnership (CPFlow) agreed to start publishing a Community Flood Risk newsletter to help support residents, businesses, and communities in relation to

flooding. This will include input from organisations such as the Environment Agency, Internal Drainage Boards (IDBs) and water companies.

### Reporting flooding

If you are in Cambridgeshire and have experienced flooding, please do report it, even if it is not internal flooding, and even if the immediate danger has passed. In the event of a flood, if there is a threat to life call 999. To report a non-life threatening flood emergency to the police, please call 101.

Outside of those events, the County Council’s flood reporting page

<https://www.cambridgeshire.gov.uk/residents/travel-roads-and-parking/roads-and-pathways/report-a-flood>

provides options to:

- Report a flooding problem on roads and pavements
- Report flooding in a property, home or garden
- Report flooding from water pipes or sewers
- Report flooding from surface water, groundwater or ordinary watercourses
- Report flooding from a main river or the sea

as well as information on how to prepare for flooding, and flood emergency contacts.

### Crucifixion

The skeleton of a man who was crucified in Roman-era Cambridgeshire is on display as part of a blockbuster exhibition at the British Museum, after a loan of the remains was agreed by Cambridgeshire County Council. The British Museum’s exhibition is called Legion: Life in the Roman Army and will run until 23 June 2024 in the Sainsbury Exhibitions Gallery.

Discovered as part of an excavation in Fenstanton, the body is only the second confirmed example of the Roman use of this barbaric punishment ever unearthed, and the first found in Europe. It was possible to prove death took place through crucifixion, as a nail was found lodged in the man’s heel.

The find was the subject of a BBC4 documentary The Cambridgeshire Crucifixion which aired in January. It showed a facial reconstruction of the man as well as scientific analyses which indicated that he was likely to have been a lower status Briton who lived his whole life in Cambridgeshire.

Once the exhibition ends, the remains will be transferred back into the guardianship of Cambridgeshire County Council’s Historic Environment Team.

\*\*\*\*\*

## HIGHWAYS & TRANSPORT

### Gulley clearing

The council’s Joint Administration has reinstated the programme of regular, cyclical gully clearing that the previous Conservative administration ceased—a decision which had contributed to many local flooding problems. The programme has completed my ward and reports have been requested.

### Highways capital programme

A draft highways capital spending programme has been put to the council’s Highways & Transport Committee for comment. It remains in draft only, and further work will be done to prioritise the use of the council’s capital funding.

### Busway works

Safety works are under way on the Guided Busway to allow the busway to return to full, two-way operation.

Since February 2022, a section of the Guided Busway in one direction has been closed between Cambridge Railway Station and the Cambridge Biomedical Campus. A temporary fence was installed whilst an independent safety review was in progress, and following ongoing communications with the Health & Safety Executive (HSE) and as part of continuous safety reviews on the busway.

Since then, the county council has been working with the bus operators and emergency services to risk-assess and design a fence to be installed next to the upstand along sections of the southern busway. It has been specifically designed with removable sections to allow for safe evacuation. This work is being carried out in sections to minimise disruption to passengers.

Contractors are working seven days a week and the busway and maintenance track are currently programmed to re-open on Saturday 30 March.

### 20mph funding

Application window opened on **15 January 2024 and closes on Friday 15 March 2024 at 5pm**. Some key changes to our website include around the narrative / guidance for applicants. This explains how you apply with additional narrative and provides some examples previously successful applications for reference.

<https://www.cambridgeshire.gov.uk/residents/travel-roads-and-parking/roads-and-pathways/improving-the-local-highway/20mph-funding>

\*\*\*\*\*

### Cambridgeshire Matters Newsletter

Cambridgeshire Matters is Cambridgeshire County Council's monthly newsletter which aims to share good news, highlights and updates from across Cambridgeshire to help our network of district, city and community members stay informed.

Find out about the great work that is taking place to support everyone in the county.

[Cambridgeshire Matters - February 2024 \(govdelivery.com\)](https://www.govdelivery.com/topics/cambridgeshire)

### Meanwhile on the Cambridgeshire & Peterborough Combined Authority (CPCA)

The following extract was taken from CPCA newsletter with regards to buses:

#### *Road to Better Buses*

*Here are our most recent surveys and consultations. The Mayor has bold plans for the bus network in our area. His vision for Better Buses to keep people connected includes adding more buses to the network, providing bus users with better information, better reliability, nicer, better quality buses and better value for money for customers. We asked our residents to tell us their stories about buses and to recommend new routes. We received 268 stories and 712 route suggestions, well exceeding our targets for both. Our next steps will be analyse comments for actionable insights and pass suggested routes on to the transport team.*

At our February CCC Full Council meeting, I asked the County Leader – Lucy Nethsingha if we – elected local members and Parish Councils could have access and be able to comment and share our local knowledge for the suggested bus routes, this along with a few other similar questions should have been taken back to the CPCA.

## MEETINGS ATTENDED and COMMUNITY WORK 2 February to 2 March 2024

### Local meetings:

Northstowe Health & Wellbeing group – pilot (5 Feb), Northstowe Active Travel (5 Feb), Northstowe Quarterly meeting with Homes England (7 Feb), Starship Robots (9 Feb), Oakington & Westwick Parish Council meeting (12 Feb), Cost of Living (15 Feb), Northstowe Delivery Group meeting (15 Feb), Quarterly Highways meeting (23 Feb).

### Council meetings:

Members Seminar – Education Transport Appeals – watched recording (1 Feb), Northstowe Bus provision (2 Feb), Full Council meeting (13 Feb), Voi Extension (14 Feb), Member Workshop – Land and Property discussion (16 Feb), Monthly catch up with Tam Parry (21 Feb).

### Community work:

Parish/Town Council monthly report, Column write ups within Northstowe News, Oakington & Westwick Journal and Over News online magazine, Northstowe Town Council Market Working Group – promoting on social media and when possible volunteering, Northstowe Foodies.

### Private case work:

Most Councillors will have private case work that they are dealing with, details of which cannot be shared due to GDPR – current themes are Transport, Flooding, Early Years, SEND queries and Highways.



## WARD NEWS

### HIGHWAYS

#### New Local Team

Local Highways Officer: Neal Stephens

Local Highways Officer: Aaron Boddington

#### Quarterly Highways meetings 2024 dates

Friday 26 April 12noon – 1.30pm

Friday 12 July 12noon – 1.30pm

Friday 1 November 12noon – 1.30pm

#### A14 Flooding Hotspots – Oakington & Fenstanton

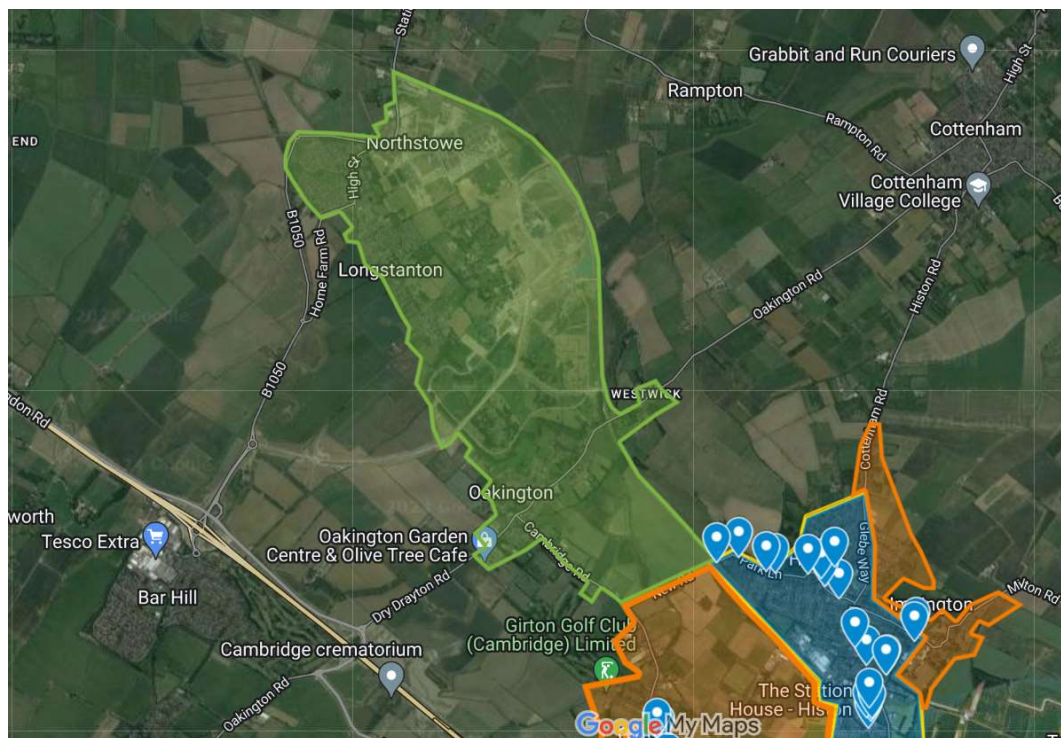
We are still awaiting for the Environment Agency's modelling report on these flood spots around Oakington, so that we can share with Homes England for Phase 2 and 3a.

#### LONGSTANTON/NORTHSTOWE Robots

Meeting took place on 9 February with Starship Robots, County Council, SCDC community officer, Local Elected members, Chair of Highways, Longstanton Parish Council representatives – Clerk, Chair, Vice-Chair and 1 x member of Northstowe Town Council. A short presentation was made by Starship Robots followed by questions. Longstanton Parish Council highlighted some key issues and shared their slides after the meeting. We are now awaiting confirmation from Starship Robots whether this area will be the next area for their expansion in Cambridgeshire.

#### VOI e-bikes and e-scooters Possible extension to pilot area: Northstowe, Longstanton and Oakington

The Department for Transport (DfT), responsible for leading the e-scooter trials, including those in Cambridge, has requested trial areas to extend the trial period by an additional two years. The current trial, scheduled to conclude on May 31, 2024, prompts the Cambridgeshire and Peterborough Combined Authority (CPCA) to draft a proposal for the Transport and Infrastructure Committee in March, seeking approval for extending the e-scooter trial until 31<sup>st</sup> May 2026. Enclosed is a letter detailing the Voi-e-scooter extension, along with an image illustrating the proposed expansion area marked in orange and green.



Furthermore, discussions have taken place with the CPCA regarding the suggestion to broaden the trial's coverage to include Waterbeach and to extend it further westward to St Ives, utilising the existing active travel infrastructure along the maintenance track.

Comments were submitted by Oakington & Westwick and Longstanton Parish Council following the feedback received by posting on Facebook pages. Northstowe Town Council decided that they would be happy to continue to the next phase if the proposed extension was approved.

## LONGSTANTON

- B1050 Cycleway footpath – I have been having discussions with the team and hopefully can be in a position to offer some updates.

- Home Farm adoption of roads below are details from County Council officers:

To outline, the County Council cannot require any developer to enter into an agreement or offer a street for adoption; the onus is always upon a developer to construct a street to standard (this includes construction/ lighting, adoption of foul and surface water drainage by the respective drainage authority (Anglian Water Services – AWS etc), and dedicate as the said street public highway via an appropriate legal mechanism.

In purchasing any property, the prospective owner should be advised by their solicitor of the presence or otherwise of an adoption agreement, and advise their client in respect of the implications if the developer should default in the delivery of the streets.

The original developers Cofton Land and Property (Developments) Ltd went into receivership in 2009 and were dissolved in 2016. Unfortunately, Cofton failed to complete a Section 38 Agreement with the County Council for the adoption of the streets before their demise.

There are two parts of the Stevenson Road, the first length from Over Road has subsequently been developed out by Barratt David Wilson (BDW), and the end phase by Taylor Wimpey (TW).

Following the demise of Cofton there have been issues with land ownership (We understand that BDW and TW have had to buy the roads back off the Crown following receivership of Cofton), and there have been technical and legal matters to resolve in respect of drainage discharge, easements, and headwalls to enable AWS to adopt the sewers. However, my understanding is that it remains the intention of both developers to complete the streets and dedicate these as public highways, and the County Council will continue to work with the developers to secure the adoption.

Having spoken to the BDW adoptions manager recently, he advises me that the key land/ easement/ drainage outfall issues have now been resolved, enabling the sewers to be adopted by AWS, and the developer will now be working with County Council Inspectors to complete the streets works to adoption standard. BDW adoption manager is coordinating this work on behalf of both BDW and TW.

A formal Section 38 (S38) Agreement in line with Section 38 of the Highways Act 1980 will not be used to adopt the streets, rather, when the remedial works are completed, and the sewers are adopted by AWS it is intended that the developer will serve a Section 37 (S37) Notice on the County Council (Section 37 Highways Act 1980). Assuming CCC accept the Notice (there are legal requirements which must be met), the works *must* serve a statutory 12-month maintenance period, following which CCC will adopt the streets, assuming the streets have not failed in this period – which would be highly unusual to be honest.

Considering all the technical/legal and works processes, we are probably looking at 18 months to 2 years before adoption can take place. In the meantime, in this instance, we are advised that the developer will remain responsible for the maintenance and upkeep of the streets, so we would recommend that this is outlined clearly on any sale to assist in avoiding a similar situation occurring. Notwithstanding the above, we are working to achieve a successful outcome to this matter.

## NORTHSTOWE

- Northstowe Nursery within the Education Campus – current update is:
  - The resident survey identified that local requirements are for full-day-care provider.
  - Our current system - Pseudo Dynamic Purchasing System (PDPS) for providers of early years education and childcare (EYEC) that was only put in place last year, does not have many full-day-care-providers. Every year we open up the PDPS to new providers. The officers thought it was better to run the round to allow more providers to join before running the application for Northstowe. This round is currently underway and will close on 8 March.
  - There will be a report going to the Children & Young People Committee on 12 March where the Northstowe Education Campus EY facility is identified as one of the future opportunities. This will be an opportunity for me to raise the urgency of the set up of the new nursery.
  - The plan is to open the call off for the new facility via the PDPS between 15 April and 10 May. We should then be able to let the successful bidder know by the start of June, to allow for a September opening. Meridian Trust who will run all of the Education Campus Schools can also bid for running the nursery.
  - Appreciate this is cutting it short for parents/carers as they would like to have their children's childcare secure for September well in advance. But I can keep updating the residents on the roadmap. Once the successful bidder has been identified I will work with them to ensure that they inform the community on how to apply for places. Please note: County Council cannot be seen to favouring one Early Years setting over another.
  - The plan is to stagger the opening of the nursery, as during the first term the reception class at Northstowe Primary School, will also be in the Nursery building until the school building is completed.
- On 15 February I led on a local meeting with SCDC and CCC officers, Northstowe Town Council representative and Sustainable Northstowe Cllr Bros Sabria, District Councillor Warren Green, Food Bank/Allotment representatives and Coop to consider setting up a Food Alliance locally in Northstowe, we talked about all that we are currently doing locally and what we could do going forward, there are some actions and considerations going forward but the main consideration is whether we can get a volunteer in the community to lead the Food Alliance. Notes from the meeting are with Cllr Bros Sabria and the definition of Food Alliance is below:

*Food Alliance is a collaborative effort involving various stakeholders within a community to address food-related issues such as food insecurity, food waste and access to nutritious food. Typically involves partnerships between councils, non-profit organisations, businesses, community groups and individuals who work together to develop and implement solutions to improve the local food system.*

*Food Alliances aim to promote food security, sustainability, and equity by fostering coordination, sharing resources and leveraging collective expertise to address complex food challenges at the community level.*

As a member of Children and Young People's committee, I very much support the commitment for funding pupils food vouchers during school holidays at our CCC full council budget meeting. This is a matter of utmost importance concerning our education system, the number of free school meals has risen from some 12,000 in 2020 to 21,000 today - that is a 70% increase.

This rise in the enrolment of pupils eligible for free school meals highlights the harsh reality of poverty and inequality that persists within our county. It is a stark reminder of the challenges faced by countless families struggling to make ends meet, where putting food on the table is a daily struggle.

## OAKINGTON AND WESTWICK

- Fly tipping near the busway, reported by Clerk, was removed by county.
- Longstanton Road, LHO confirmed that the location of the works was footway works carried out opposite crossway garage, the works was completed after tree roots causing trip hazards. Note that this means no work has been done on Airfield Road.
- Dry Drayton roadworks will take commence on Monday 4 – Friday 15 February, all details posted on Facebook and shared on Oaky Folk. Current plans for Surface Dressing program is on 4 June for half a day, details to be confirmed nearer the time.

## OVER

- As Highways meeting was not a suitable date for clerk, as it was rearranged, I will need to go through the details with LHO and get him to feedback on the outstanding highway issues.
- 5A bus – a local resident has raised concerns with timings of this route as follows: any improvements envisaged for this service as spring approaches? Possibly an evening service and some buses on Sundays. The viability of the weekday services would be improved by alternating the direction of travel. I have written back copying in all parties including Stagecoach for a response. I have also written directly to the CPCA officers too and awaiting reply.
- Flooding from Storm Henk to the ditch near the Over Community Centre – following onsite meeting with SCDC and CCC officers, it was confirmed that there will be a crew on site on 5 March for jetting works to be carried out in The Doles, Over to clear the culvert as per the maps provided. Once the crews have been on site and carried out the works, CCC officer will update us all (incl. Clerk) of what works we have carried out and also if we come across any further obstructions and if this is the case what remedial actions can be taken going forward, this is only relating to the culverts under the highway. The Ditches that run between the Community Centre and the rear of the house along Station Road, and also the ditches that run along the Over Footpath 3 will be Riparian Ownership and therefore these will need to be maintained by the adjacent landowner.
- Fen End sewage flooding issues, do not fall under the County Council remit, but we are still conducting a way of raising these issues to Anglian Water from across the County.

## COUNCILS, RESPONSIBILITIES AND KEY GOVERNMENT FUNDED ORGANISATIONS

If you have a problem or concern do not worry too much about who can solve it just ask the question and we will endeavour to signpost to the right person. The organisational structure of Cambridgeshire is complex, but it is important to identify where responsibility lies.

<p><b>County Council</b></p> <p>Responsibilities: Education, Transport, Highways, Heritage, Social care, Libraries, Trading standards, - Waste management, Maintaining their estate.</p> <p>Some of these services are shared between Peterborough City Council and Cambridgeshire County Council but any concerns should be directed to the county council.</p>
<p><b>District Council</b></p> <p>Responsibilities: Council tax payments and benefits, Household bin collections, Housing and housing benefits, Council leisure facilities, Environmental health, Residential planning.</p>
<p><b>Parish/ Town Council</b></p> <p>Responsibilities: Looking after community buildings, Open spaces, Allotments, Play Areas, Bus shelters.</p>
<p><b>Greater Cambridge Partnership (GCP)</b></p> <p>'The local delivery body for a City Deal with central Government worth up to £500 million over 15 years, to vital improvements in infrastructure (decarbonising transport), supporting and accelerating the creation of 44,000 new jobs, 33,500 new homes and 420 additional apprenticeships.'</p> <p>Partnership between Cambridge City Council, Cambridgeshire County Council, South Cambridgeshire District Council, University of Cambridge.</p>
<p><b>The Combined Authority, Cambridge and Peterborough, our elected Mayor</b></p> <p>'A combined authority (CA) is a legal body set up using national legislation that enables a group of two or more councils to collaborate and take collective decisions across council boundaries.'</p> <p>What our mayor does – Business support, skills, housing, transport, environment, international, digital connectivity, resilience, research, and strategy. New homes.</p>
<p><b>Police and Crime Commissioner, Cambridge and Peterborough</b></p> <p>To support and challenge the Chief Constable to provide effective and efficient policing services for the area.</p>
<p><b>Cambridgeshire and Peterborough Fire Authority</b></p> <p>The Fire Authority is the governing body responsible for delivering a fire and rescue service to Cambridgeshire and Peterborough. It is made up of Cambridgeshire County Councillors and Peterborough City Councillors.</p>

## CONTACT DETAILS

Please do not hesitate to contact me if you have any questions about the above, or any other matters.

Firouz Thompson, County Councillor for Longstanton, Northstowe, Over and Oakington & Westwick  
Email: [firouz.thompson@cambridgeshire.gov.uk](mailto:firouz.thompson@cambridgeshire.gov.uk)

For those on social media we have highly active Facebook groups:

<https://www.facebook.com/groups/2066298150052161/> - Longstanton, Oakington and Northstowe

<https://www.facebook.com/libdems3rdMay18> - Over & Willingham

NOTE: Homes England areas in Phase 2 Northstowe including South Access Road West and new B1050 roundabout – any estates or maintenance issues should be report to 24/7 helpdesk number 0845 603 1485. The number is manned 7 days per week 24 hours per day and all calls are placed in an auditable system to ensure matters are progressed.